



**North Lawndale
Greening Committee**



*Congratulations
Doretha Penn
CCGA Legacy Garden Honoree*

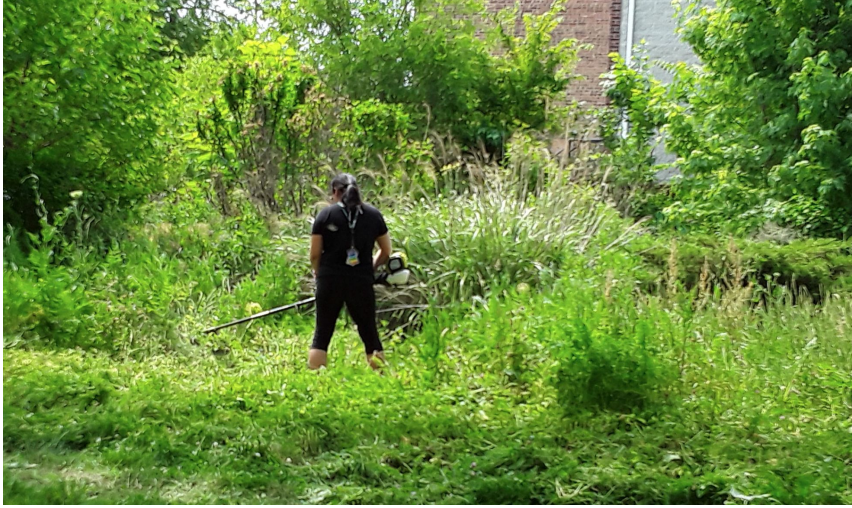
NORTH LAWNSDALE GREENING COMMITTEE - NLGC

Since the 1980's a diverse patchwork of green spaces has appeared on North Lawndale's map. These pocket gardens are sites of community activism, neighborhood beautification and youth education by...





...Beautifying the neighborhood and increasing the biodiversity of plants and wildlife...



...Eliminating vacant lots that collect litter and larger debris, that provide gathering places for criminal or anti-social activities,..



...Attracting families and supporting a climate for healthy economic development that will provide family wage jobs close to home...



...Providing recreation and educational opportunities related to greening and environmental issues for children and youth...



...Improving the appearance of and promoting broader community support for local schools, libraries, youth centers, and other cultural and educational institutions...



...Providing gardens, and green spaces where senior citizens can relax and enjoy the outdoors in safety and where people of all ages can come together to work on issues, celebrate successes, and get to know each other better...



...Promoting the growth and ingestion of healthy foods while engaging in physical activity...



...Supporting a Youth Garden Corp which helps maintain our gardens and provide horticultural knowledge and skills to young people aged 14 and up.

NLGC Gardens

GARDEN OF HOPE - 3834 W. FILLMORE

STORY BOOK GARDEN - 3351 W. 13TH ST.

SLUMBUSTERS GARDEN - 1944 - 1960 TRUMBULL

PRESERVE GARDEN - 1231 S. CENTRAL PARK

HARRELL HOME GARDEN - 3843-45 W. FILLMORE

GARDEN OF HOPE - 3824 W. FILLMORE

LOVE AND PEACE GARDEN - 1900 S. RIDGEWAY

CCA ACADEMY GARDEN - 1234 S. HARDING

SEARS SUNKEN GARDEN - 3200 W. ARHINGTON

MARTIN LUTHER KING GARDEN - 3800 W. 16TH ST.

VELMA JOHNSON MEMORIAL GARDEN - 3400 W. FLOURNOY

GREATER LAWNSDALE HERITAGE GARDEN - 1509 S. LAWNSDALE

GARDEN OF PEACE, HOPE AND LOVE - 1517 S. HARDING

ONE STRAW COMMUNITY GARDEN - 3343 W. DOUGLAS

CRYSTAL'S PEACE GARDEN - 3852 W. POLK

BETTY SWAN ARBORETUM - 3840 W. ARHINGTON

AFRICAN HERITAGE GARDEN - 1245 S. CENTRAL PARK

PERMA PARK - 1328 S. PULASKI

GARDEN AT STONE TEMPLE MB CHURCH - 3622 W. DOUGLAS - NEW

16TH AND SPAULDING GARDEN - NEW

The Greening Committee



New opportunities

READING & GREENING

In the Gardens



PICK YOUR OWN VEGETABLES
READ TO A PLANT
VOLUNTEER

Monday, Sept. 21 - 16th and Spaulding Garden
Monday, Sept 28th Slumbusters Garden, 1945 S. Trumbull
5:30 - 6:45

Children 5 - 12 and their families



SATURDAY, OCTOBER 24, 2020 10AM-1PM
SB GARDEN: 1944 S. TRUMBULL, CHICAGO

LAST OFFICIAL WORK DAY AT
SLUMBUSTERS!

NORTH LAWDALE GREENING COMMITTEE
GET TOGETHER

VOLUNTEERING - HOT CIDER

CALL FOR ARTISTS



STEP OUT

People, Health, & Nature 2020

THEME: Air Quality & Green Spaces
AWARD: Four \$1,500 Grants
DEADLINE: November 3, 2020

We are seeking artists from
NORTH LAWDALE & SOUTH LAWDALE
to create works which demonstrate the
relationship between people and nature.

The Nature Conservancy

OPN Center for the Arts
OPERATION CENTER FOR THE ARTS
5514 S SACRAMENTO AVE CHICAGO, IL 60637

LATINOS
PROGRESANDO



NLCCC GROWSS and Stone Temple Baptist Church invite you to a

SOUP GIVEAWAY

DISCOVER DELICIOUS FALL FLAVORS
WITH LOCALLY SOURCED INGREDIENTS

EVERY MONDAY AT STONE TEMPLE
2:00-4:00 PM, STARTING NOVEMBER 16
3622 W DOUGLAS BLVD

Social distancing and mask wearing will be enforced



WEDNESDAY GRANT WRITERS GROUP

NLGC MEMBERS MEET EVERY WEDNESDAY AT 7:00 PM TO SHARE FUNDING SOURCES, STRATEGIZE ON UPCOMING GRANTS, AND LEARN BASIC GRANT WRITING SKILLS. THIS IS DONE TO MAKE THE GRANT WRITING PROCESS MORE EQUITABLE FOR ALL. ANYONE IS WELCOME TO JOIN THIS GROUP.

Social Media

<https://nlgreeningcommittee.org>

<https://www.facebook.com/nlgreeningcommittee>

<https://www.facebook.com/The.AmateuR.URban.EnviRonmental1st>